



<https://princity.com>

[support@princity.com](mailto:support@princity.com)

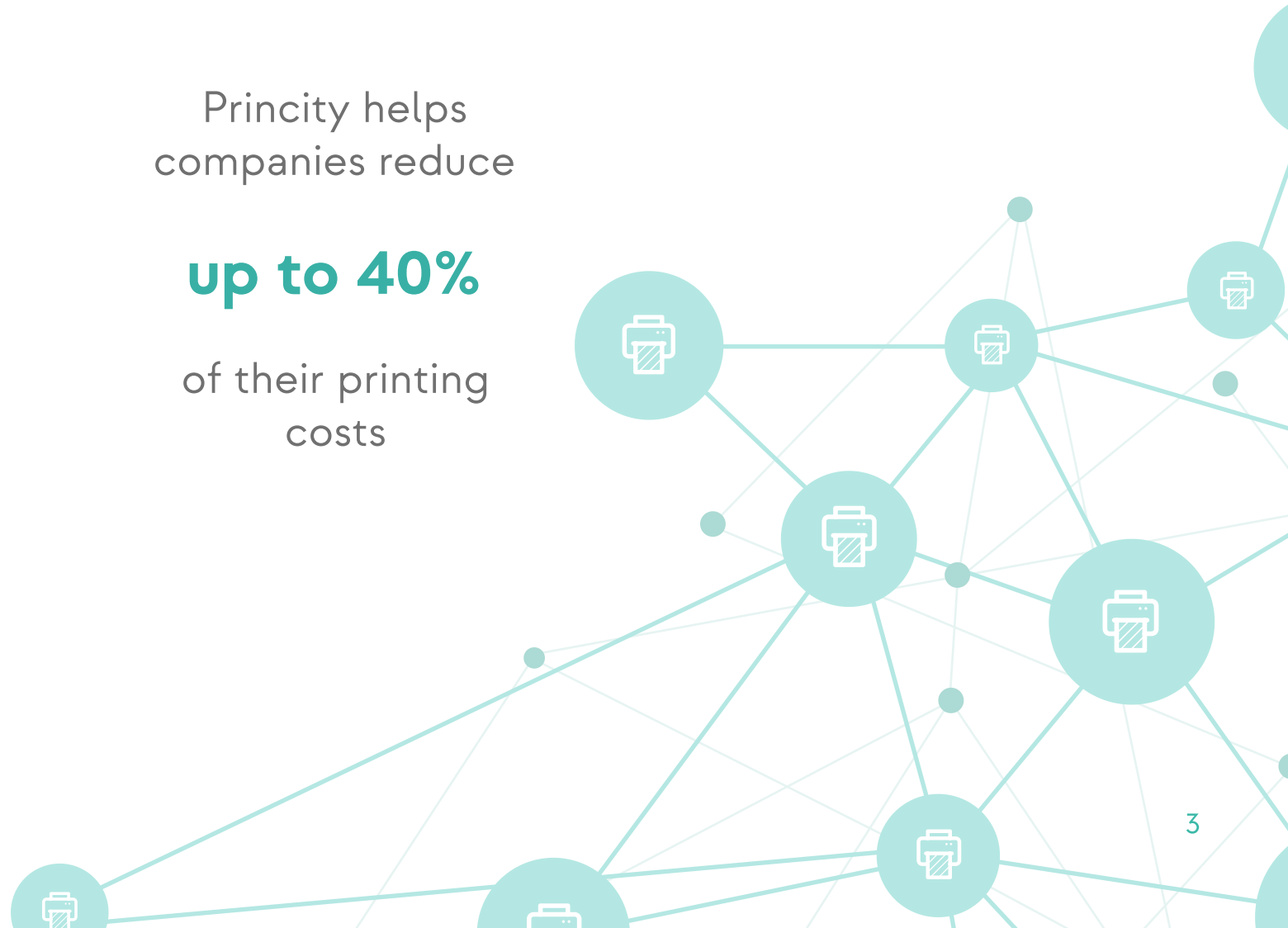


Innovative management of  
**printers and toners**

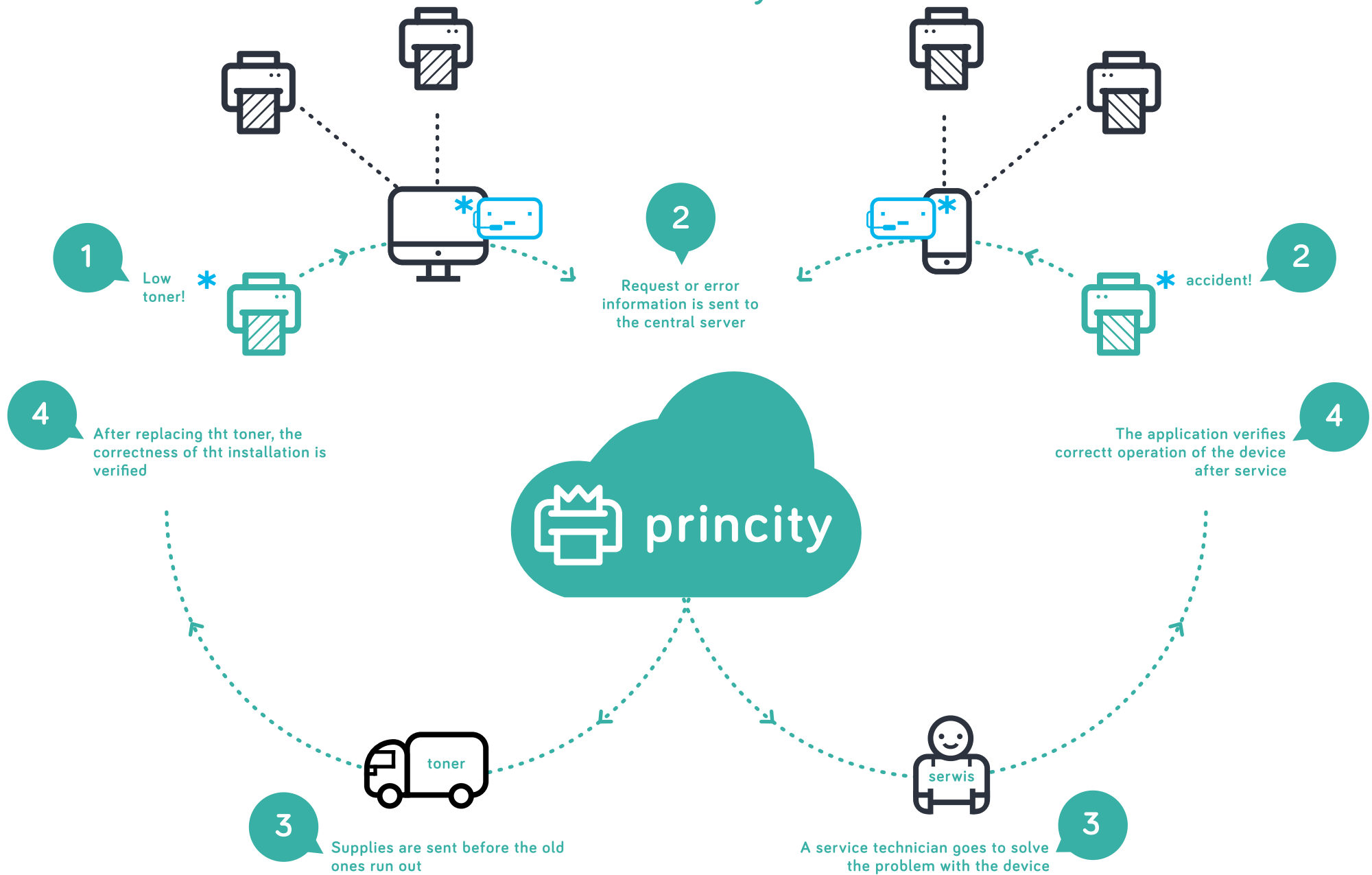
Princity helps  
companies reduce

**up to 40%**

of their printing  
costs



## How does Princity work?





Complete insights  
about printers



Checks the amount  
of printed pages



Pro-actively orders  
supplies



Detects crashes  
automatically

Why is it worth  
**installing Princity?**

# Management of the device in the cloud



Princity manages all print device regardless of geographic location  
Automatically detects all network devices, giving precise information on the state of your devices

Princity supports network devices as well as devices locally connected

### Add devices

#### Select agent from the list

ITS-demo, ul. Wiejska 1, 11-111, Warszawa

Baltica

Test

proxy-07

0

0

0

Ministry of Digitalization, 1-13 St Giles High St, ...

Ministry of Digitalization

Add

3

Uslugi Bud, Lowisko 500B, 36-053, Kamien

Uslugi Bud

0

klekot test, fds, 3, 2

klekot test2

0

Ministry of Digitalization

Address range to search

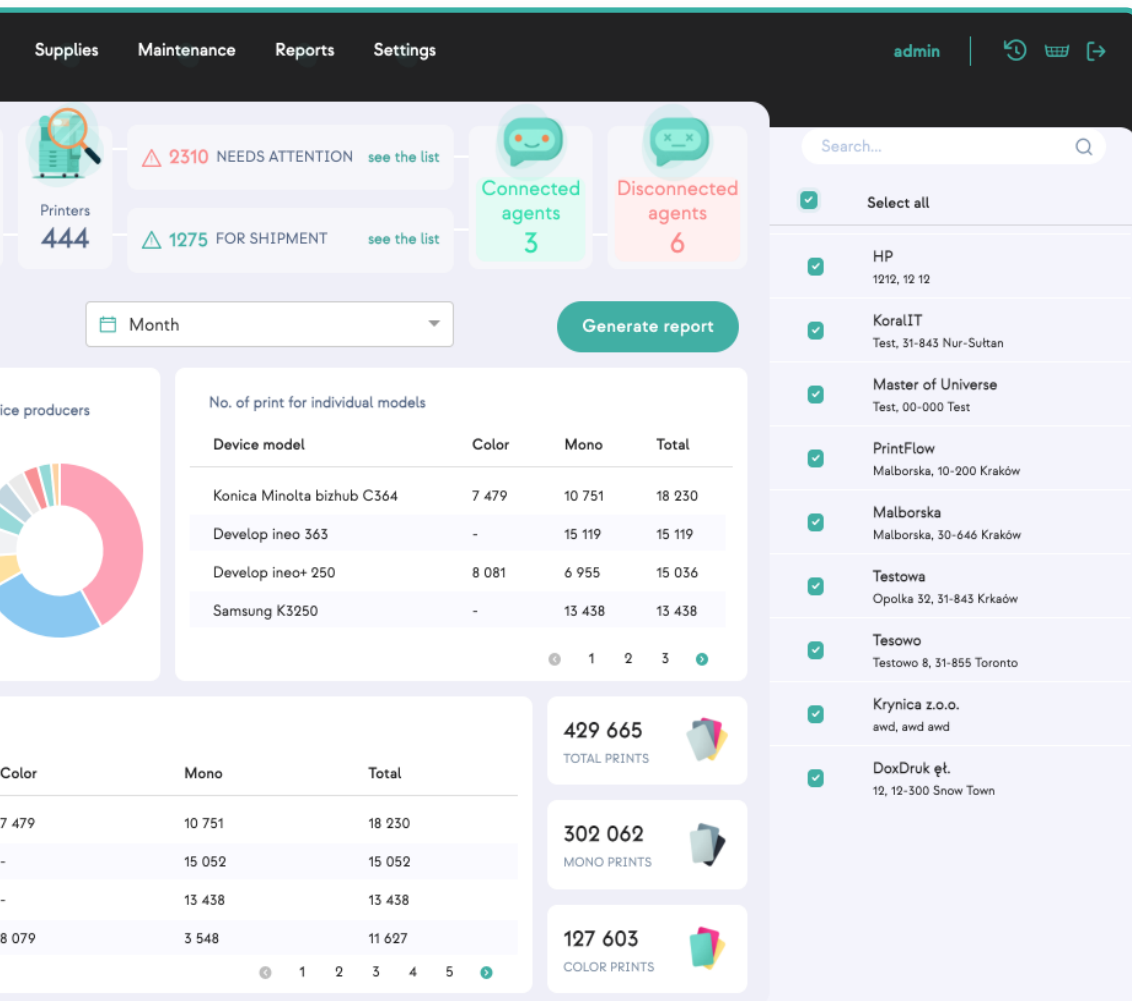
10.2.1.0/24

Start device o

3 entries

| <input type="checkbox"/> | Device model number   | Location     | IP address      | Serial Number |
|--------------------------|-----------------------|--------------|-----------------|---------------|
| <input type="checkbox"/> | Ricoh MP 2501         | <div>▼</div> | 149.156.172.182 | E333M62019    |
| <input type="checkbox"/> | HP LaserJet P2055     | <div>▼</div> | 149.156.165.212 | CNC1737651    |
| <input type="checkbox"/> | HP LaserJet Pro M4... | <div>▼</div> | 149.156.165.227 | VNH3F08517    |

Add unmanaged device



## Settlement printed pages



Princy measures printed pages on devices. Calculates costs and assigns them to location and MPK. As the only one tool can calculate print on networked devices and connected locally

# Proactive delivery supplies



Algorithms implemented in Princity help automatically order new supplies before the previous ones run out. Integration with the shipping companies means information about where your material is located can be accessed immediately

The screenshot shows the 'Supplies' tab in the Princity dashboard. The left sidebar contains navigation links: Alerts (564), Waiting orders (101), All orders, and All supplies. The main area displays a table with 657 entries. The table columns are ID, Type/Color, Part number, Manufacturer, and Device. The data rows show various toner and cartridge orders for different devices.

| ID              | Type/Color | Part number               | Manufacturer | Device                       |
|-----------------|------------|---------------------------|--------------|------------------------------|
| KRK_CYFRA-ORDER | ● TONER    | Toner (Black)             |              | KRK_CYFRA-2<br>Develop ineo+ |
| KRK_CYFRA-ORDER | ● TONER    | CF283A                    |              | KRK_CYFRA-5<br>HP LaserJet P |
| kt-ORDER-59     | ● TONER    | Yellow Toner              |              | kt-89<br>Ricoh SP C360       |
| KRK_CYFRA-ORDER | ● TONER    | CE285A                    |              | KRK_CYFRA-2<br>HP LaserJet M |
| kt-ORDER-5      | ● OPC      | Wkład bębna czarnej       |              | kt-11<br>Xerox VersaLin      |
| kt-ORDER-60     | ● TONER    | Black Toner Cartridg      |              | kt-32<br>Samsung M33         |
| KRK_CYFRA-ORDER | ● TONER    | W2033A<br>MAGENTA TONER F |              | KRK_CYFRA-9<br>HP Color Lase |

The tab shows all consumable that have been generated by the system along with their level.



| ce                   | Reports          | Settings                                    | Sergii              | ↶       | 📄 | ↷ |
|----------------------|------------------|---|---------------------|---------|---|---|
| 19 entries Search... |                  |   |                     |         |   |   |
| Parameters           | Severity level   | Description                                 | Activation Date     | Actions |   |   |
|                      | ● Critical error | Paper Jam<br>Trained                        | 01.03.2022 14:45:28 | ⋮       |   |   |
|                      | ● Critical error | Zawiadom serwis:SC899 (40800)<br>Engineer   | 01.03.2022 14:45:03 | ⋮       |   |   |
|                      | ● Critical error | 13.01.00 - ZACIĘCIE W PODAJI<br>Trained     | 16.11.2021 13:03:27 | ⋮       |   |   |
|                      | ● Critical error | 61.00.03 Błąd głowicy drukujące<br>Trained  | 26.05.2021 14:53:29 | ⋮       |   |   |
|                      | ● Critical error | Appeler le SAV:SC899 (40800)<br>Engineer    | 26.05.2021 24:48:19 | ⋮       |   |   |
|                      | ● Critical error | Call Service Center:SC865-1 (40<br>Engineer | 28.04.2021 01:55:03 | ⋮       |   |   |
|                      | ● Critical error | Paper Misfeed: Internal/Output<br>Trained   | 27.04.2021 21:55:07 | ⋮       |   |   |
|                      | ● Critical error | 59.F0 ERROR<br>Trained                      | 22.04.2021 19:55:51 | ⋮       |   |   |

# Management of failures



Princity detects device and supply failures and gives the exact error code

# How does Princity reduce printing costs?

Total consumption of supplies **saves up to 20%** of their purchase costs

- Princity allows you to choose and purchase the optimal supplies. This reduces printing costs by up to 30%
- Princity reduces service costs by more than half due to fast diagnosis, information about the cause of the failure and the need to call for service. An extra employee to support printing devices is not needed
- Princity will highlight the most overloaded and expensive equipment

# We support all devices on the market specific in a unique way



We create a unique mechanism for each model family in order to  
download data from printers. We currently support over

**5000 printers**

both network and local



Canon



XEROX®

brother®

 KYOCERA

EPSON



TOSHIBA



Lexmark™

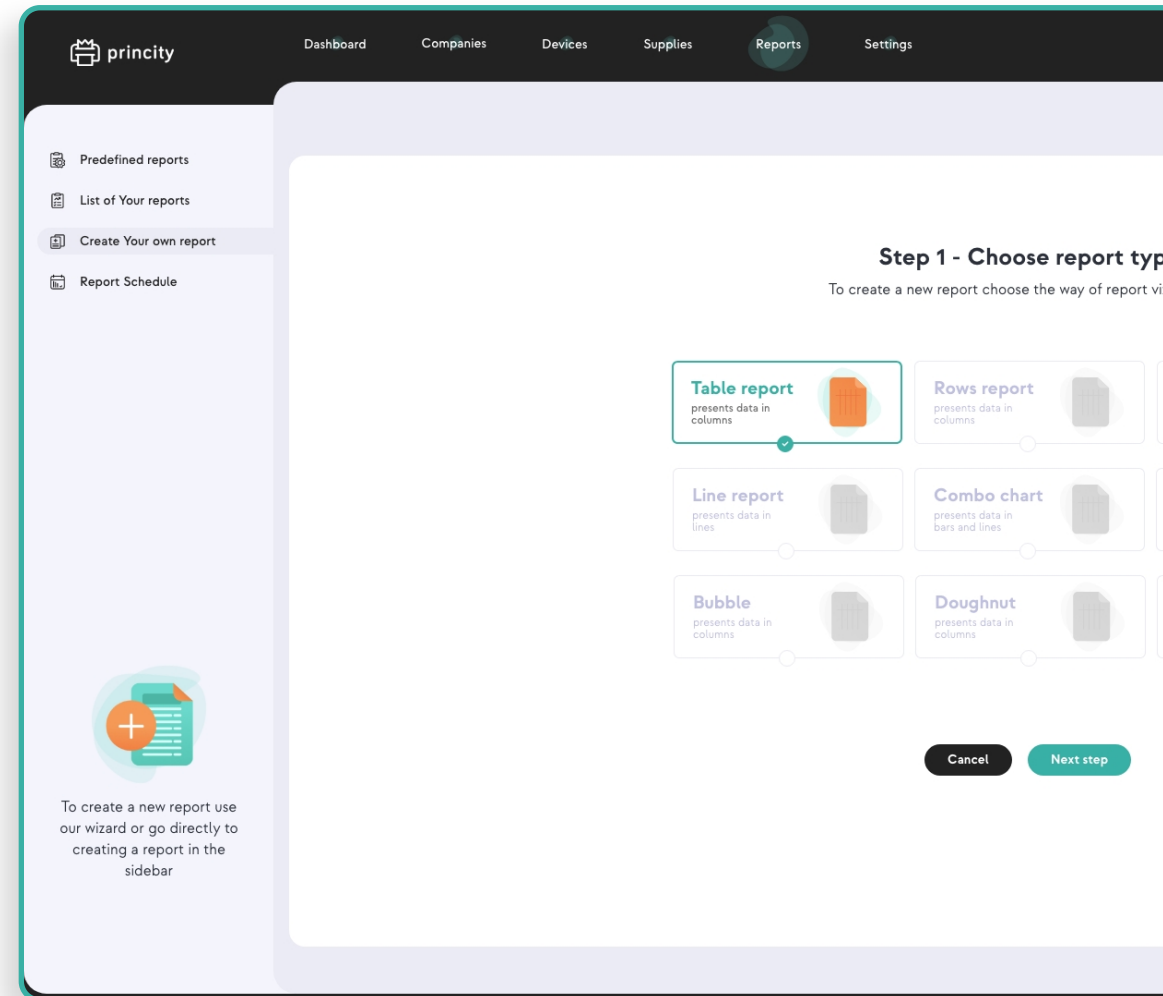
SHARP

olivetti

# Advanced reports



Reports will help you  
in efficient printing  
management





## Other functionality

Princity allows you to fully modify the look and feel of the application. Princity can also work on your server and under your domain



Advanced  
filtering



Secure web  
hosting



Audit of  
the institution



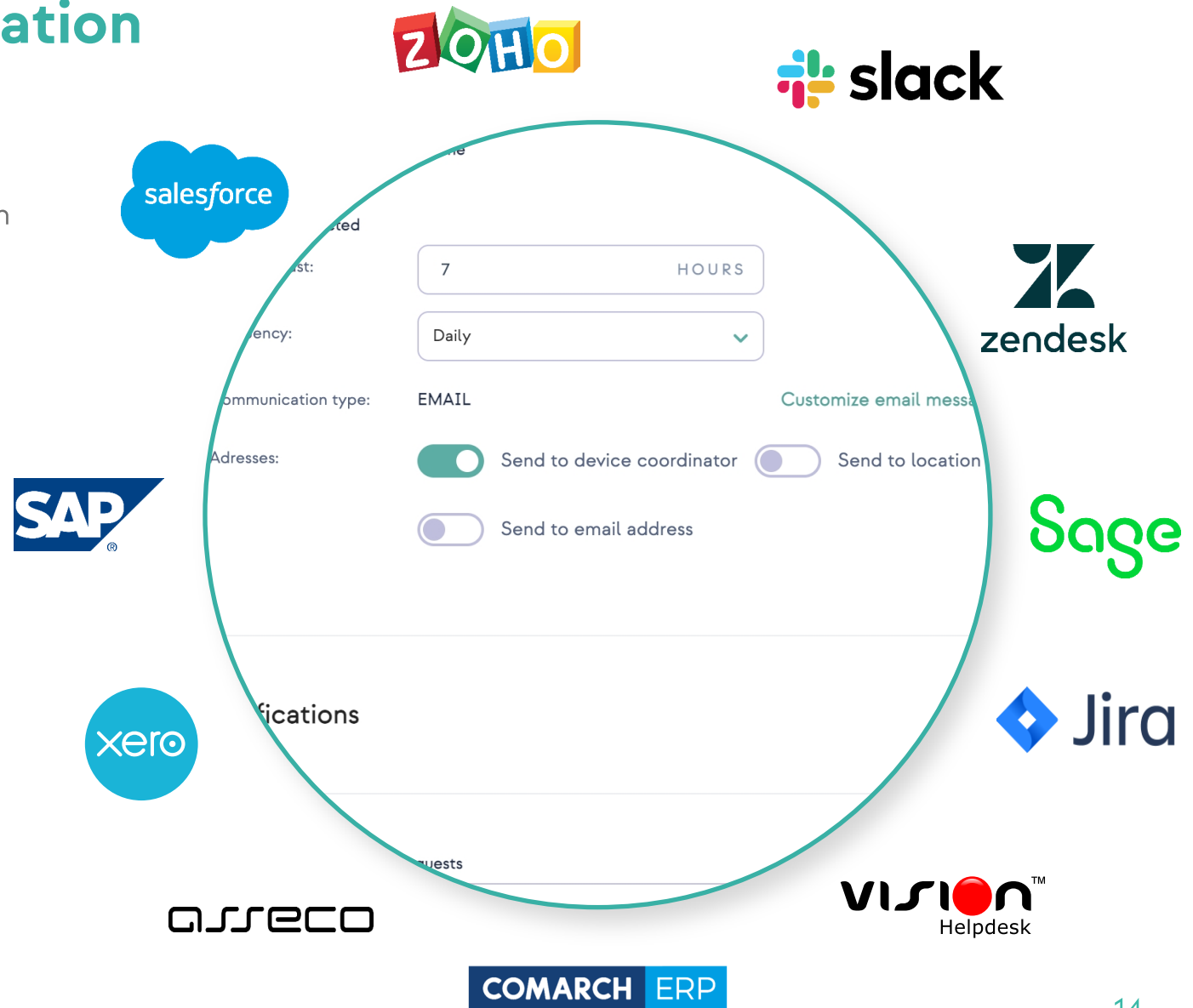
Flexible price  
model



Graphic  
arrangement

# API for easy integration with Princy

Princy open APIs for easy integration with accounting systems and storage systems.  
Princy perfectly matches your infrastructure



# Security



The connection between the Agent application and the server is secured using TLS with two-sided authentication. The Agent Setup comes with a set of X509 \*\* based authentication credentials

Princity data is stored on Microsoft Azure servers so **you can be 100% sure** of service availability and security of information storage

# Partners program

The partners program is for firm that sells printers and supplies. With Princity you can offer your customers a unique service

## What does Princity give:

- White Label solution: Your customers see only your logo and branding
- Increased sales of consumables and customer relationships
- Settlement per printed page
- Integrate the solution with your own supplies store